

Middlebury
Township

LAND AUCTION

3.68 ACRES WOODED LAND
MIDDLEBURY TOWNSHIP, ELKHART COUNTY

Located ON THE SOUTH SIDE OF CR 18 JUST EAST OF CR 33
OR 1 MILE WEST OF CR 35

Tuesday, September 29, 2009
at 6:00 p.m.

Auction will be conducted at the land

This land is nestled in the quiet country of Middlebury Township, Orchard View Elementary & Northridge High Schools. Wooded land, wonderful views and a perfect location.

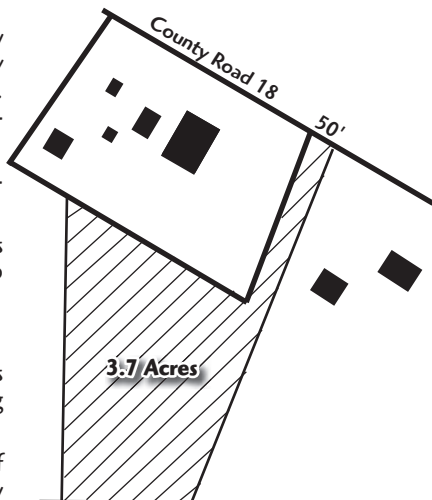
*County Approved building site with conventional septic system.

Property with the characteristics of this land is next to impossible to find, not to mention buy at auction.

Plan now to be there.

Terms: Bidders may bid on the land in its entirety. 10% down day of sale with closing in 30 days.

Any announcement made on the day of the sale will take precedence over any previously released information, printed or otherwise.



Paul Miller, Seller

Auction Conducted By:



BARTEL & COMPANY Realtors— Auctioneers
PO Box 1381, Middlebury, IN 46540
574-825-2115 or 1-800-860-8118
www.bartelandcompany.com

Brad B. Hooley, Auctioneer
AUO9200009

Tim Herli, Auctioneer
AUO19500024

